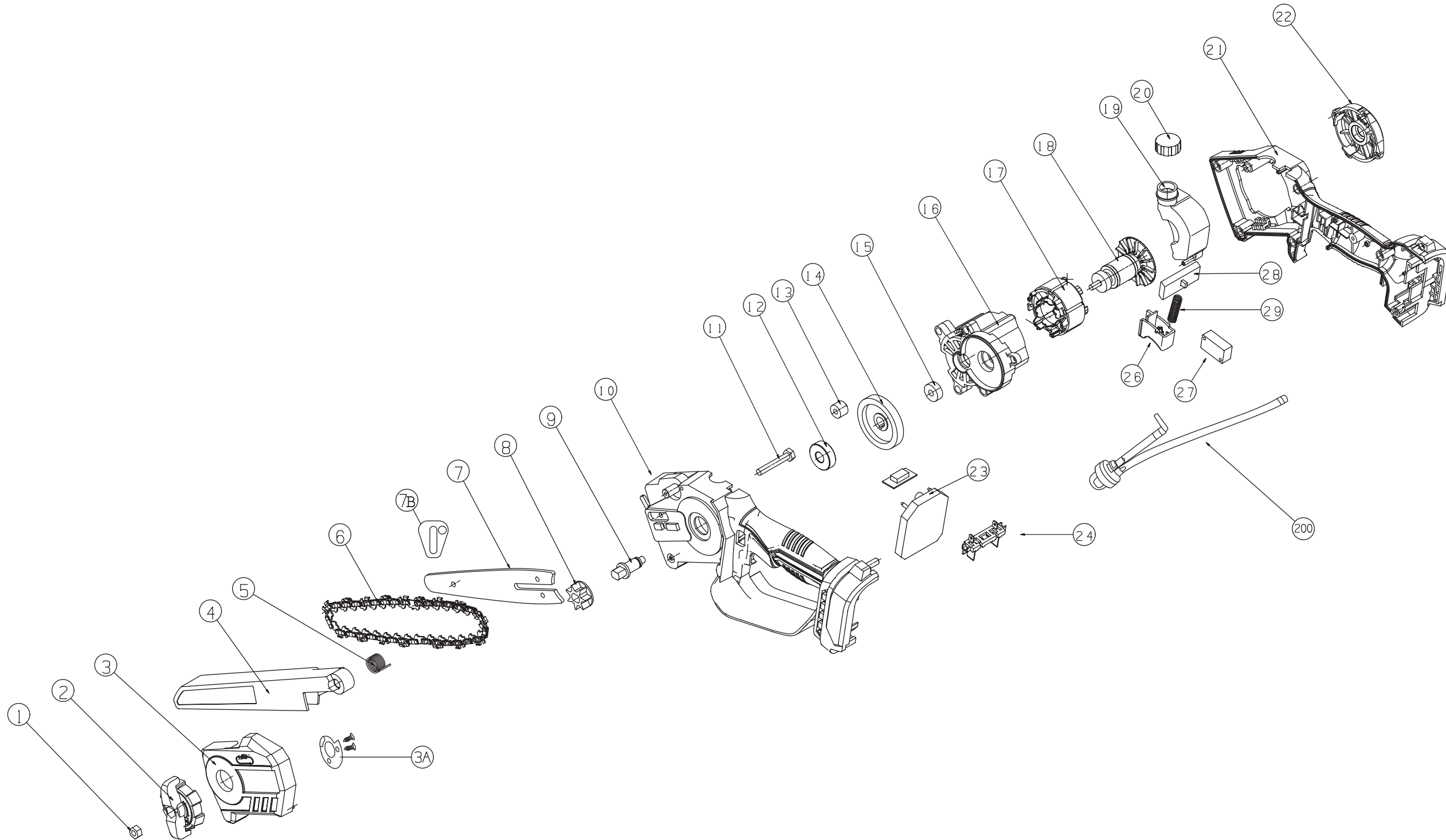


BRUSHLESS



| No. | ΠΕΡΙΓΡΑΦΗ | ΠΟΣ. |
|-----|--------------------------------------|------|
| 1 | Nut | 1 |
| 2 | Adjust knob | 1 |
| 3 | Guide bar cover | 1 |
| 3A | Tensioner | 1 |
| 4 | Chain guard | 1 |
| 5 | Guard spring | 1 |
| 6 | Chain | 1 |
| 7 | Guide bar | 1 |
| 7B | Chain tensioner | 1 |
| 8 | Chain wheel | 1 |
| 9 | Screw arbor | 1 |
| 10 | Left case | 1 |
| 11 | Screw arbor | 1 |
| 12 | Bearing | 1 |
| 13 | Oil ring | 1 |
| 14 | Big gear | 1 |
| 15 | Bearing | 1 |
| 16 | Aluminum parts | 1 |
| 17 | Stator | 1 |
| 18 | Rotor | 1 |
| 19 | Oil pot | 1 |
| 20 | Oil pot cover | 1 |
| 21 | Right Case | 1 |
| 22 | Motor cover | 1 |
| 23 | Control panel | 1 |
| 24 | Pin | 1 |
| 26 | Switch button | 1 |
| 27 | Micro switch | 1 |
| 28 | Safety switch left and right buttons | 1 |
| 29 | Switch spring | 1 |
| 200 | Pump | 1 |